

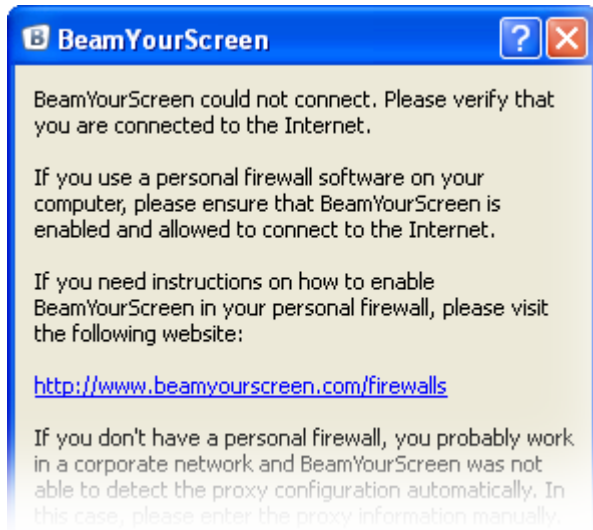
BeamYourScreen & Personal Firewalls

- ZoneAlarm

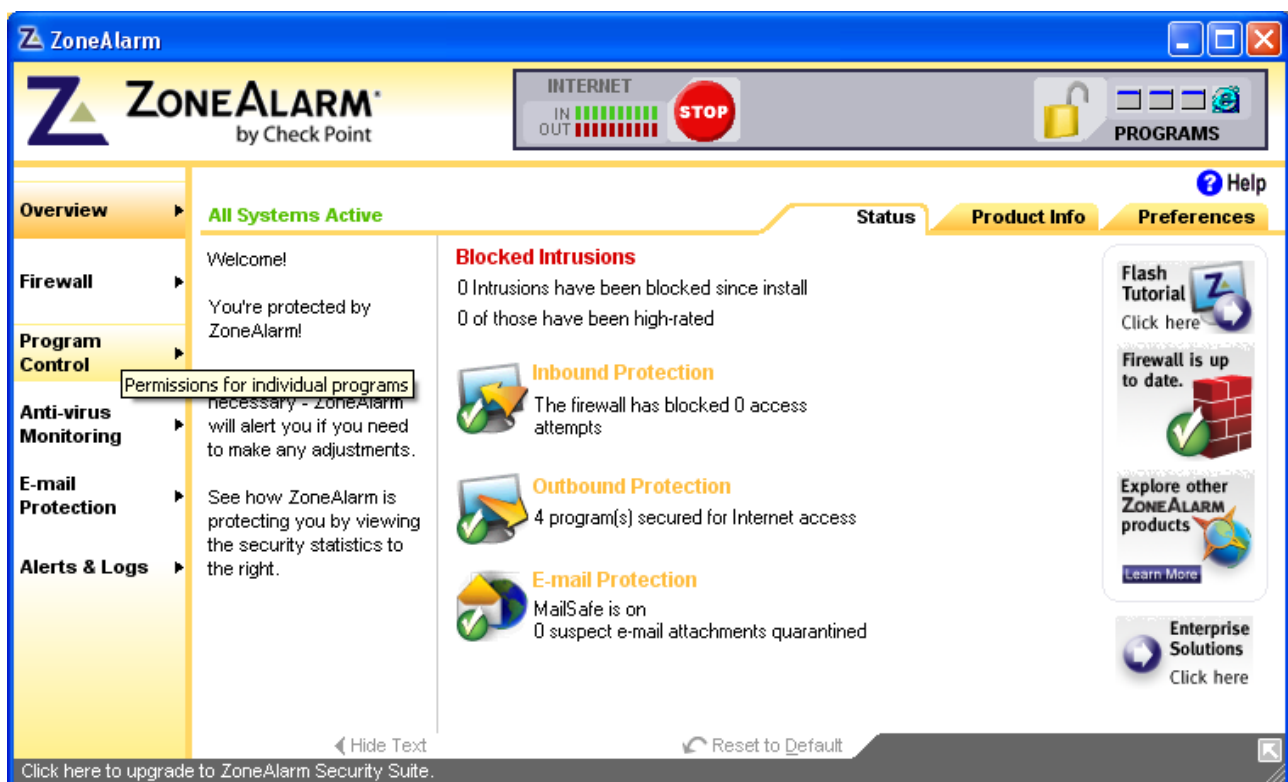


Create an Exception Rule

If you use the ZoneAlarm personal firewall on your PC you might have to first create an **Exception Rule** for BeamYourScreen. In case you receive the following message and you use ZoneAlarm, please proceed as described below.

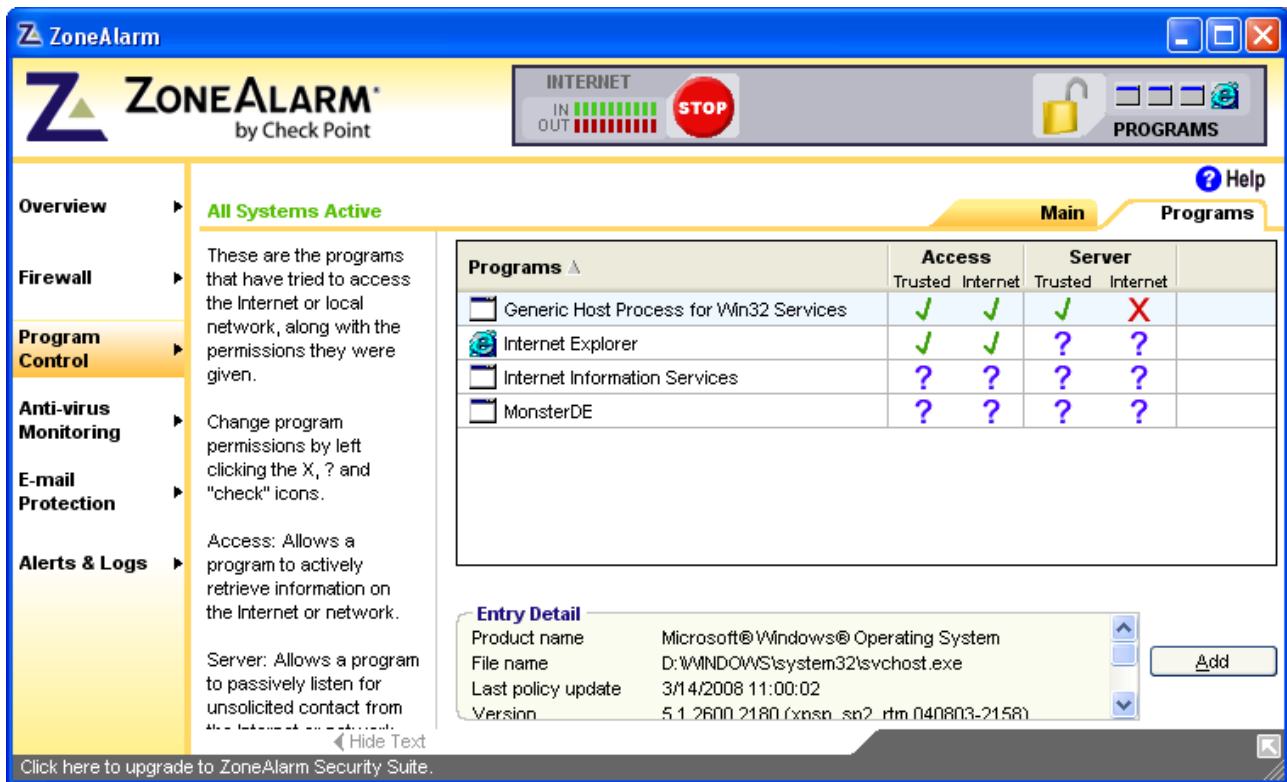


Click on the ZoneAlarm icon  in your system tray next to your computer clock.

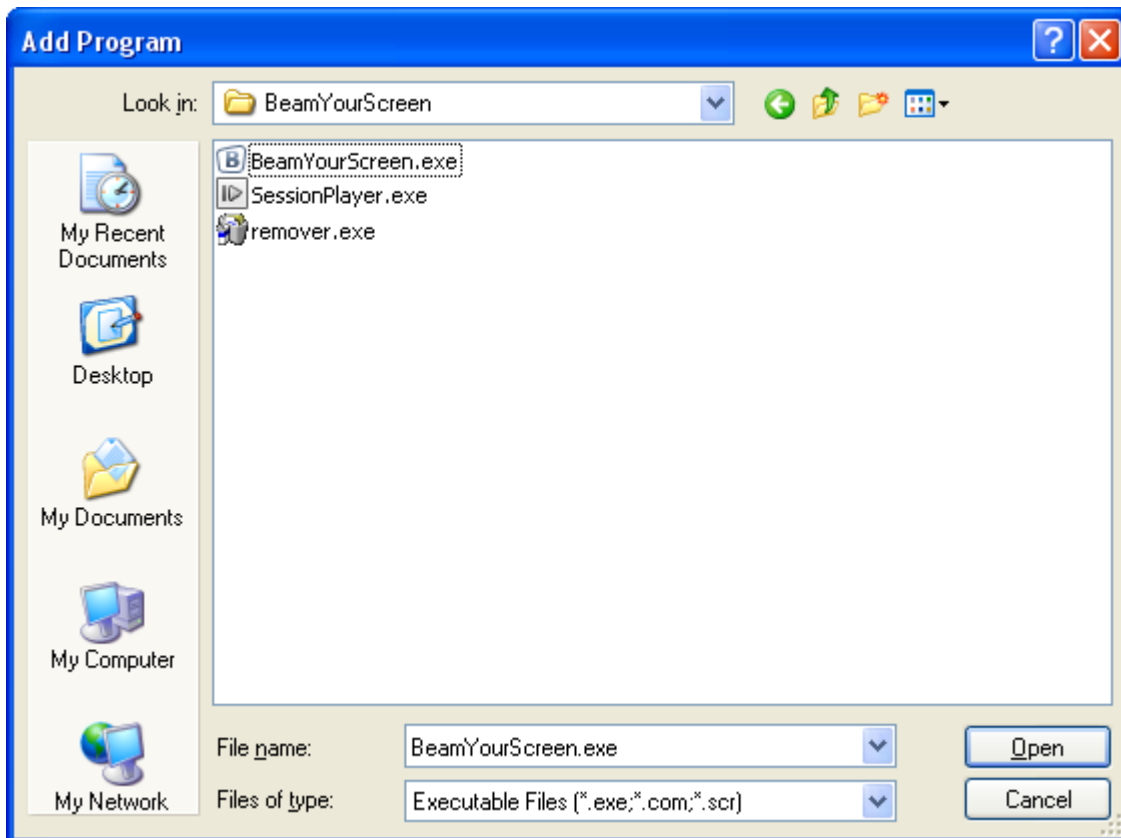


The ZoneAlarm main window will appear. In the vertical navigation on the left-hand side, click on **Program Control**.

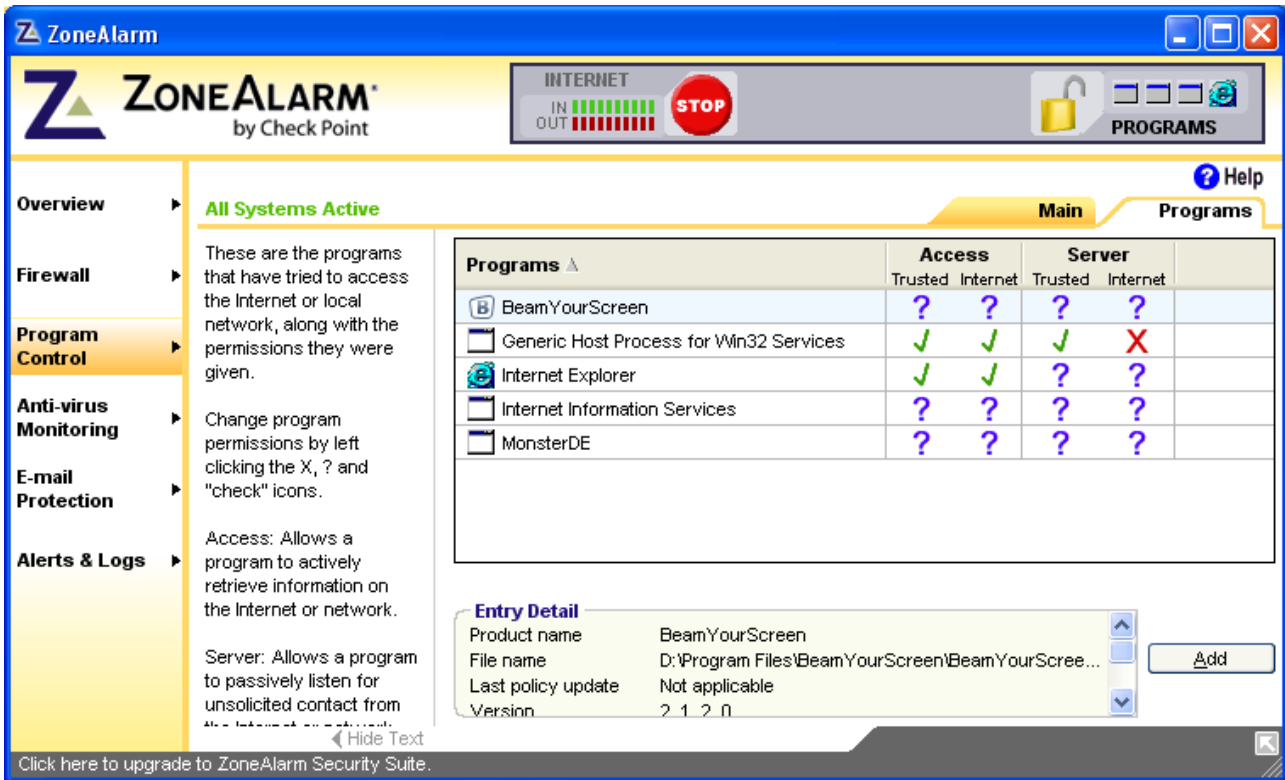
The ZoneAlarm Program Control will open. Click on the Programs tab.



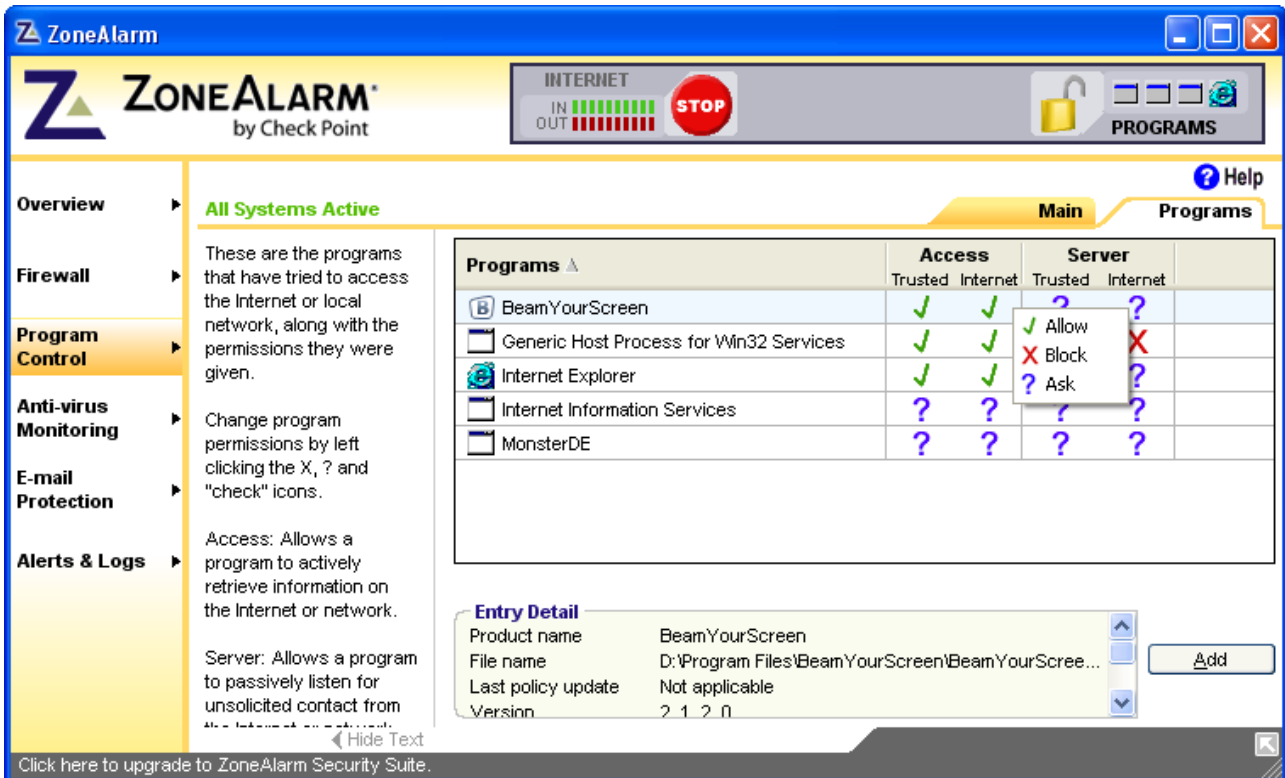
Click on Add. Browse to the BeamYourScreen executable file, highlight it and click Open.




BeamYourScreen will then appear in the Programs list.

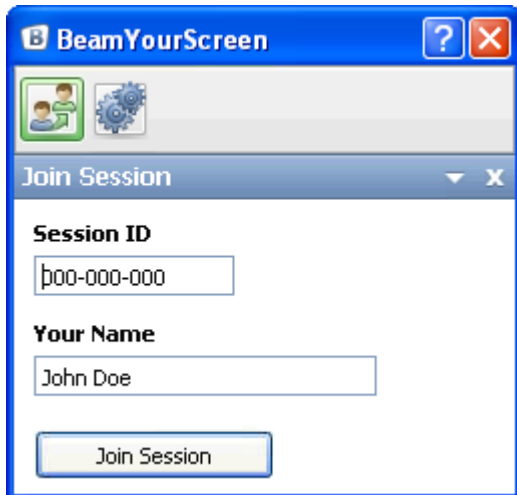


Click in the Access column and choose Allow.

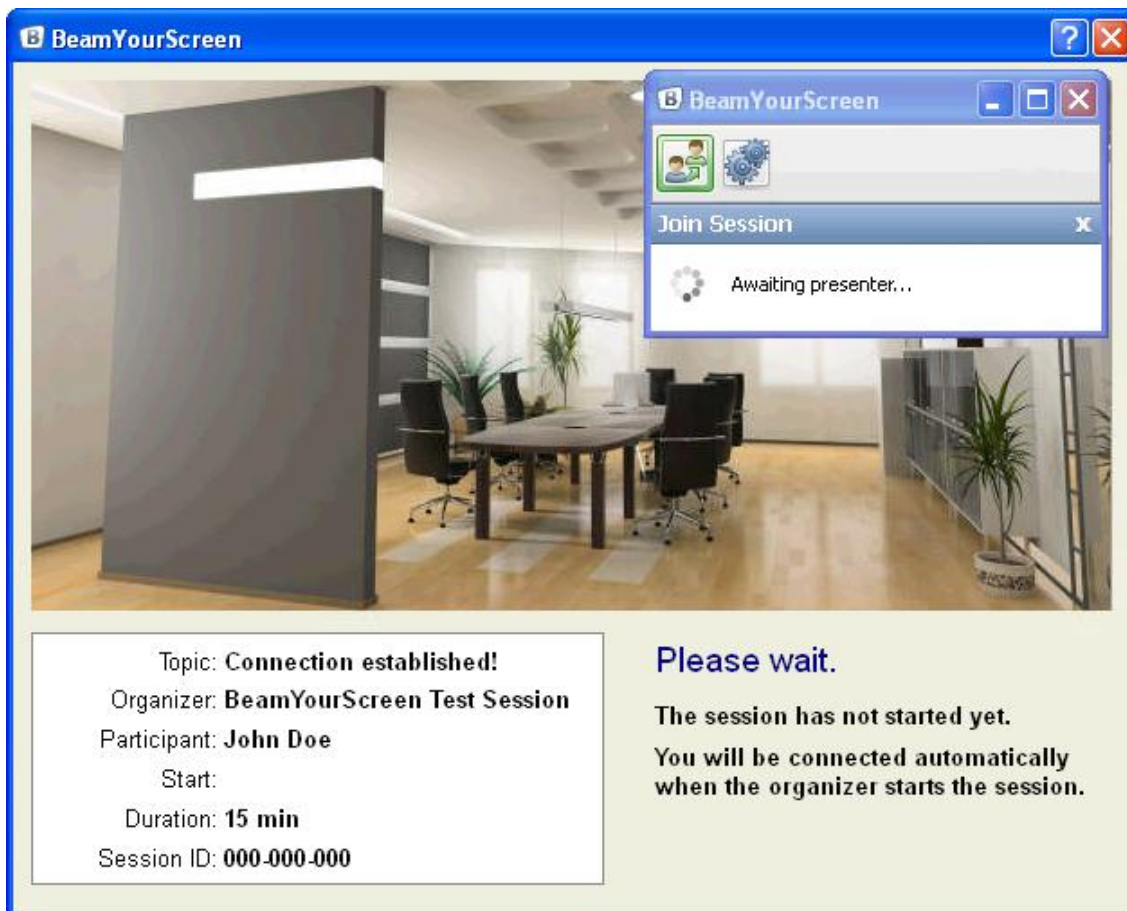


Run a Connection Test

Go to the BeamYourScreen homepage and click on Join Session. When prompted enter 000-000-000 as the session ID along with your name. Then click Join Session. Alternatively you can open the software on your computer. To do so, click on Start menu > BeamYourScreen > BeamYourScreen > to open and run the software. The panel will appear on your screen. Click on the  button and enter the 000-000-000 session ID and your name. Then click Join Session.



The following message will appear confirming that you can establish a connection with BeamYourScreen:



Support

We offer support by **Email** and **Phone**:

Email: support@BeamYourScreen.com

Phone: UK: +44-(0)203-514-0019

USA: +1-646-484-8992

Germany: +49-(0)621-7001-9980

Please feel free to contact us should you have any questions.