

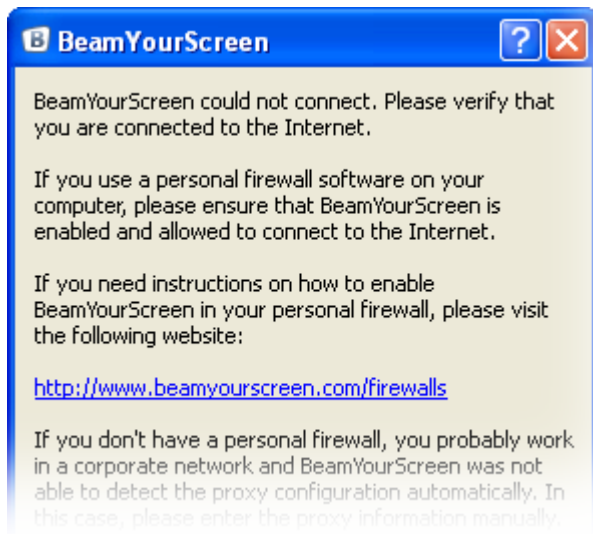
# BeamYourScreen & Personal Firewalls


- AVG



## Create an Exception Rule

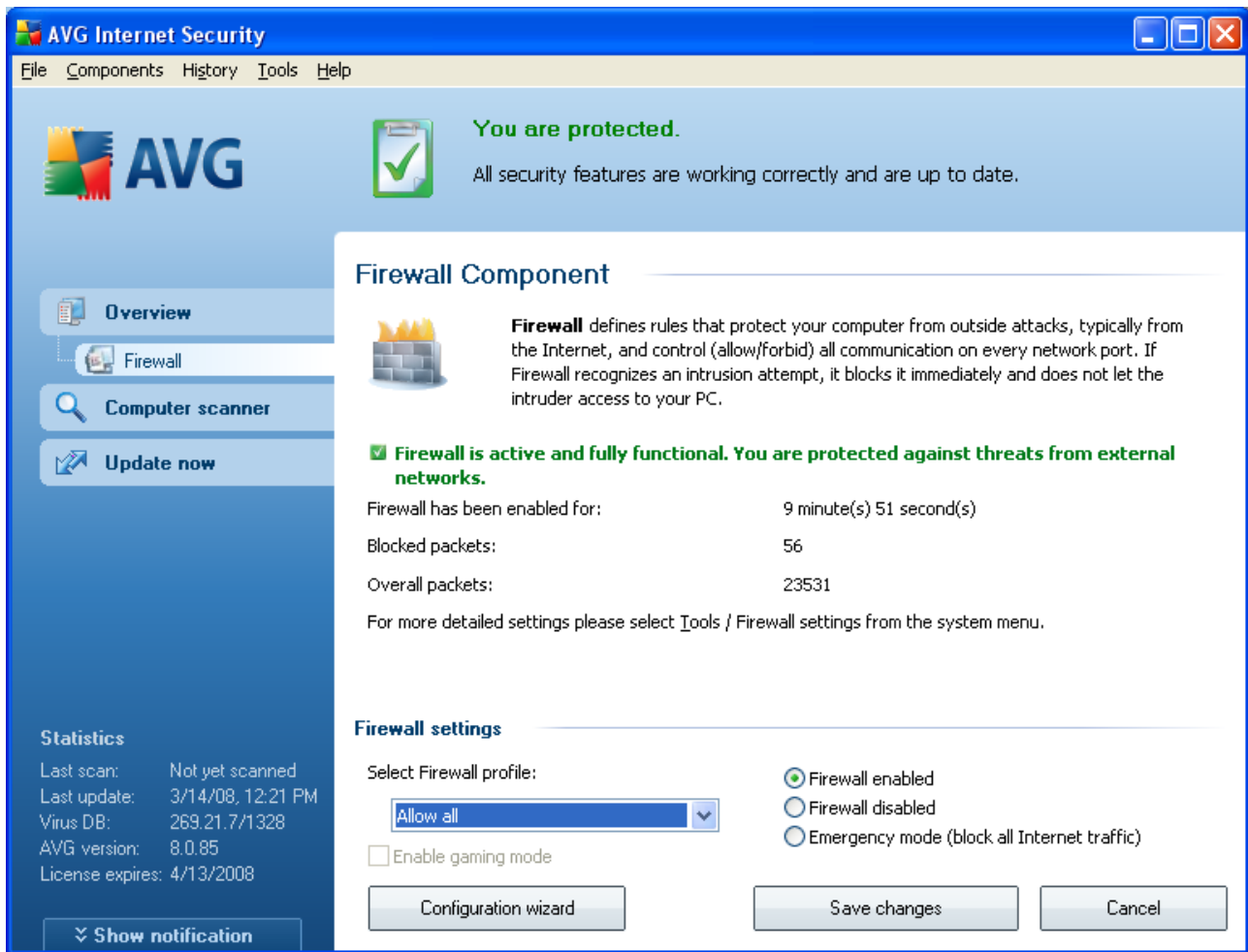
If you use AVG Internet Security personal firewall on your PC you might have to first create an **Exception Rule** for BeamYourScreen. In case you receive the following message please proceed as described below.




Click on the AVG Internet Security icon  next to your computer clock. The AVG Internet Security window will open. Click on **Firewall**.

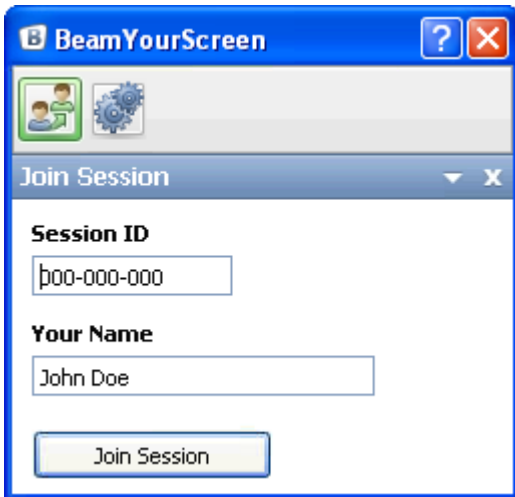


Under Firewall settings choose Allow all in the drop down menu.

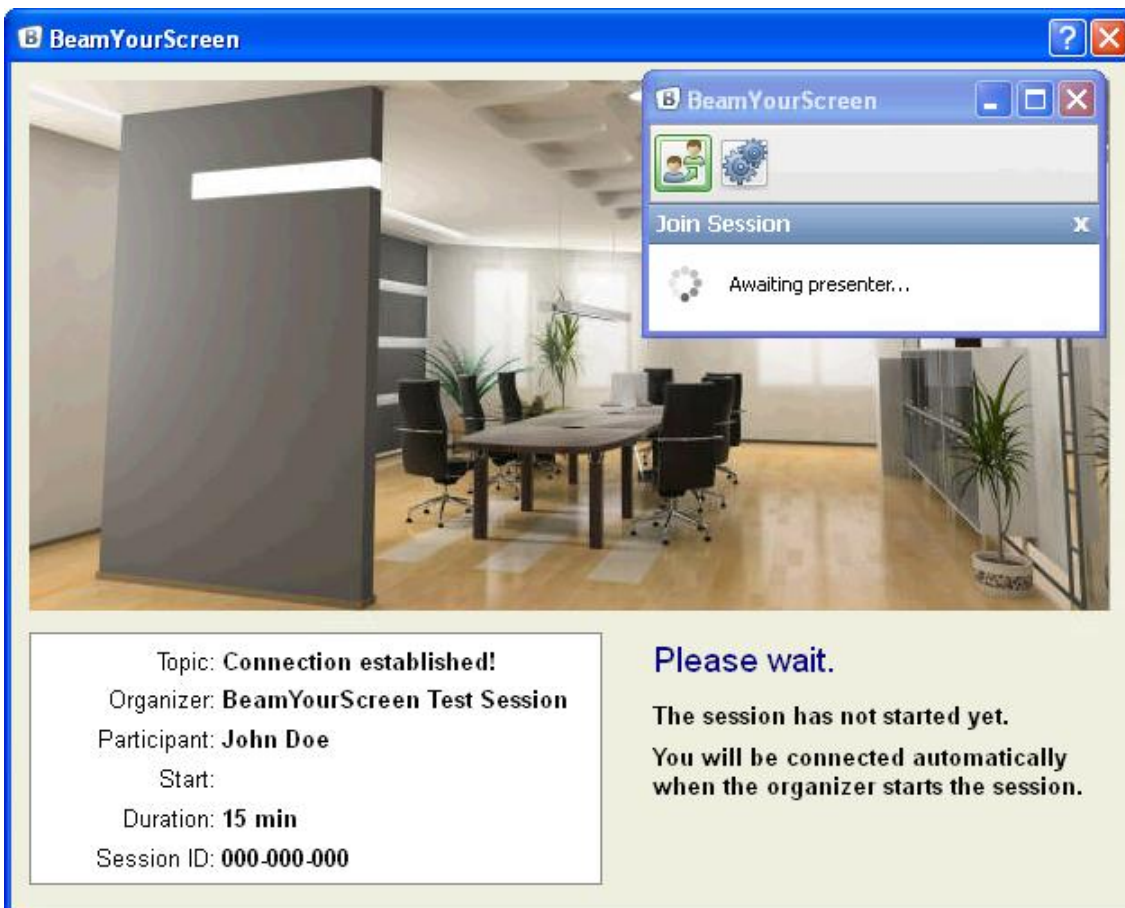


## Run a Connection Test

Go to the BeamYourScreen homepage and click on Join Session. When prompted enter 000-000-000 as the session ID along with your name. Then click Join Session. Alternatively you can open the software on your computer. To do so, click on Start menu > BeamYourScreen > BeamYourScreen > to open and run the software. The panel will appear on your screen. Click on the  button and enter the 000-000-000 session ID and your name. Then click Join Session.



The following message will appear confirming that you can establish a connection with BeamYourScreen:



## Support

We offer support by **Email** and **Phone**:

**Email:** [support@BeamYourScreen.com](mailto:support@BeamYourScreen.com)

**Phone:** UK: +44-(0)203-514-0019

USA: +1-646-484-8992

Germany: +49-(0)621-7001-9980

Please feel free to contact us should you have any questions.